

COVINGTON HOMES



MODERN DESERT *elevation D*



MID-CENTURY COLORADO *elevation E*



ECLECTIC PLAINS *elevation F*

TIMBERS - MODERN

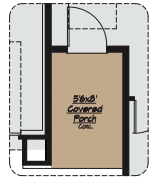
The Evergreen, Plan 414

1,842 - 3,274 Finished Sq Ft
3,687 Total Sq Ft
3 - 5 Bedrooms
2 - 3 Bathrooms
2 - 3 Car Garage

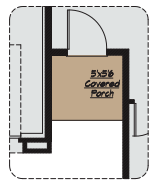


Proud Builder
**St. Jude Dream Home[®]
Giveaway**

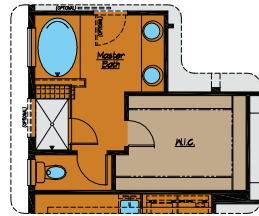
COVINGTON HOMES
13737 Struthers Rd, Suite 200, CS 80921
www.covingtonhomesco.com



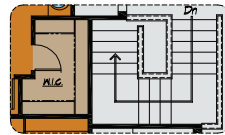
(Optional)
Elev - "F" Front Entry



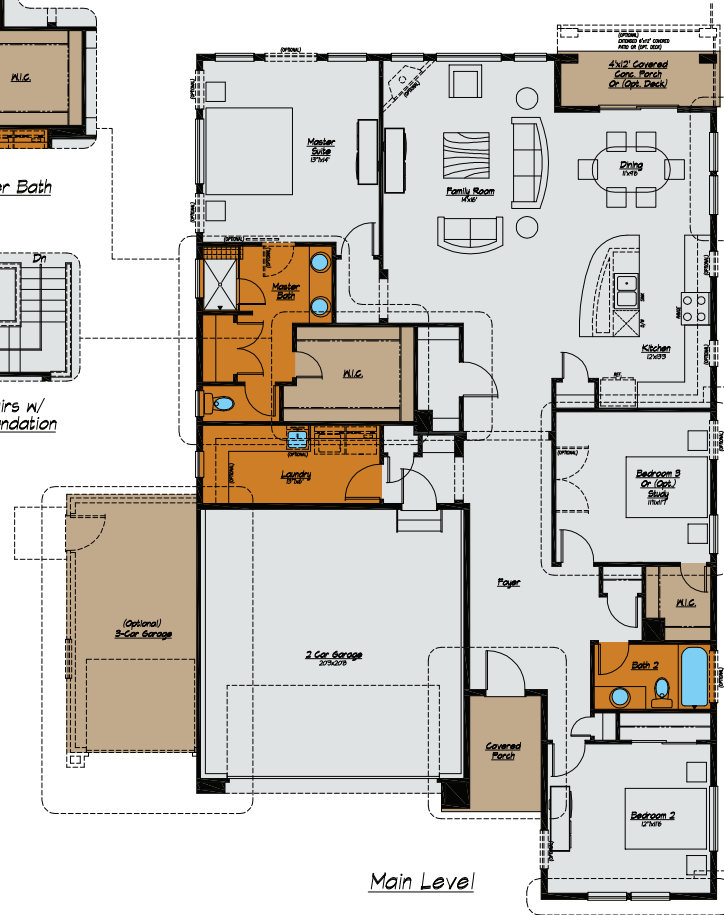
(Optional)
Elev - "E" Front Entry



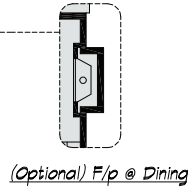
(Optional)
5-Piece Master Bath



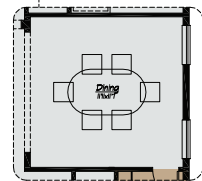
(Optional) Stairs w/
Basement Foundation



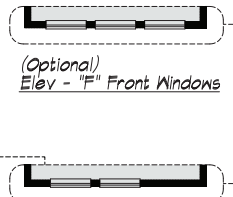
Main Level



(Optional) F/p @ Dining



(Optional) Dining



(Optional)
Elev - "F" Front Windows



(Optional)
Elev - "E" Front Windows

The Evergreen, Plan 414
 1,842 - 3,274 Finished Sq Ft
 3,687 Total Sq Ft
 3 - 5 Bedrooms
 2 - 3 Bathrooms
 2 - 3 Car Garage



Prices, specifications and availability subject to change without notice, in a continuous effort to improve its product, Covington Homes reserves the right to make changes or modifications to plans, specifications, materials, features and colors without notice. Window and window locations may vary per exterior. All square footages are approximate and buyer is informed not to rely on estimates and should independently verify room dimensions on his/her home. rev. 1-2015.



The Evergreen, Plan 414
 1,842 - 3,274 Finished Sq Ft
 3,687 Total Sq Ft
 3 - 5 Bedrooms
 2 - 3 Bathrooms
 2 - 3 Car Garage



*(Optional)
 Basement Level*

Prices, specifications and availability subject to change without notice, in a continuous effort to improve its product, Covington Homes reserves the right to make changes or modifications to plans, specifications, materials, features and colors without notice. Window and window locations may vary per exterior. All square footages are approximate and buyer is informed not to rely on estimates and should independently verify room dimensions on his/her home. rev. 1-2015.