

COVINGTON HOMES



CAPE COD *elevation A*



MODERN FARMHOUSE *elevation B*



MOUNTAIN PRAIRIE *elevation C*

TIMBERS - TRADITIONAL

The Juniper, Plan 401

1,744 - 3,205 Finished Sq Ft

3,492 Total Sq Ft

3 - 5 Bedrooms

2 - 3 Bathrooms

2 - 3 Car Garage



Proud Builder
**St. Jude Dream Home[®]
Giveaway**

COVINGTON HOMES
13737 Struthers Rd, Suite 200, CS 80921
www.covingtonhomesco.com

The Juniper, Plan 401

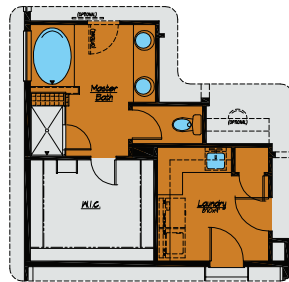
1,744 - 3,205 Finished Sq Ft

3,492 Total Sq Ft

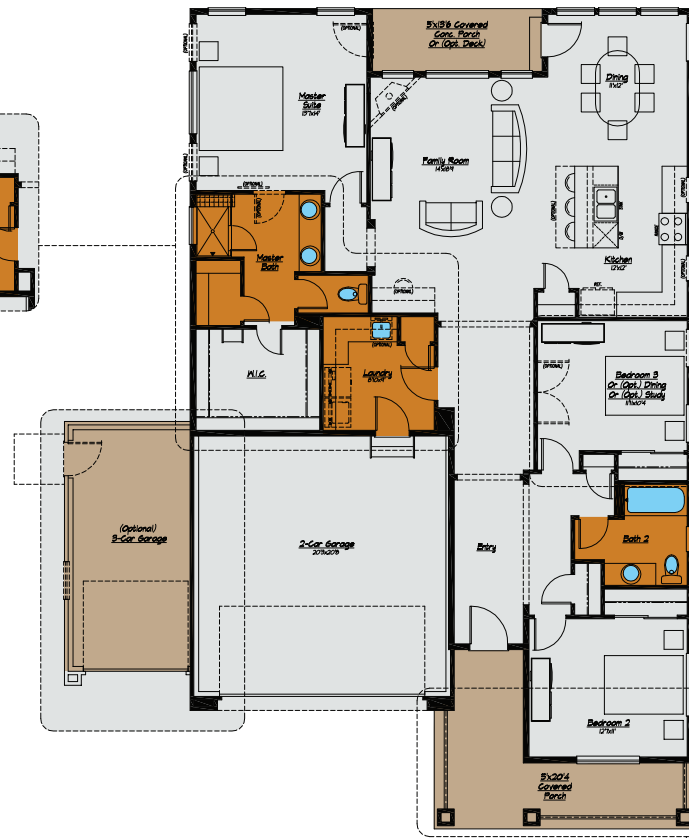
3 - 5 Bedrooms

2 - 3 Bathrooms

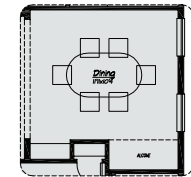
2 - 3 Car Garage



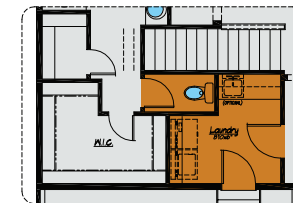
(Optional)
5-Piece Master Bath



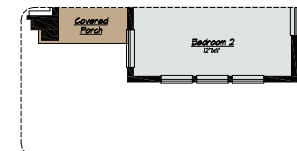
Main Level



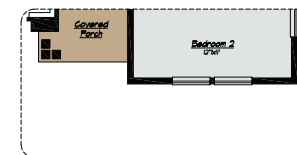
(Optional) Dining



(Optional) Stairs w/
Basement Foundation



(Optional)
Elev. - "C" Windows



(Optional)
Elev. - "B" Windows



Prices, specifications and availability subject to change without notice, in a continuous effort to improve its product, Covington Homes reserves the right to make changes or modifications to plans, specifications, materials, features and colors without notice. Window and window locations may vary per exterior. All square footages are approximate and buyer is informed not to rely on estimates and should independently verify room dimensions on his/her home. rev. 1-2015.

The Juniper, Plan 401

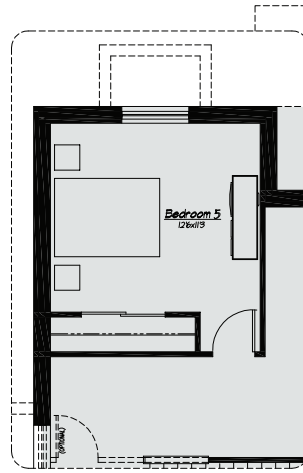
1,744 - 3,205 Finished Sq Ft

3,492 Total Sq Ft

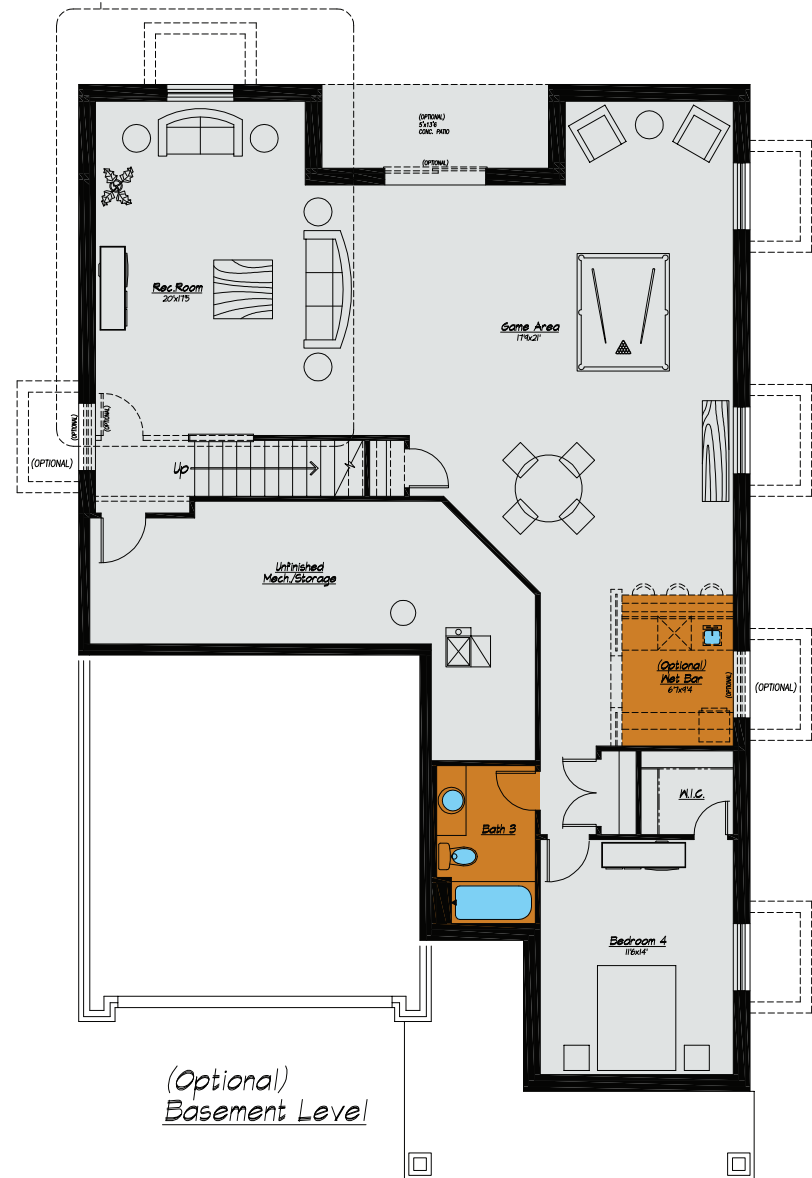
3 - 5 Bedrooms

2 - 3 Bathrooms

2 - 3 Car Garage



(Optional) Bedroom 5



(Optional) Basement Level



Prices, specifications and availability subject to change without notice, in a continuous effort to improve its product, Covington Homes reserves the right to make changes or modifications to plans, specifications, materials, features and colors without notice. Window and window locations may vary per exterior. All square footages are approximate and buyer is informed not to rely on estimates and should independently verify room dimensions on his/her home. rev. 1-2015.