

COVINGTON HOMES



ECLECTIC PLAINS *elevation E*



MID-CENTURY COLORADO *elevation F*



MODERN DESERT *elevation G*

COTTAGE GARDEN - MODERN

The Foxglove, Plan 513

1,904 - 2,076 Total Finished Sq Ft (w/ crawlspace or unfinished basement)

2,601 - 2,945 Total Finished Sq Ft (w/ finished basement)

2,713 - 3,057 Total Sq Ft (w/ opt. basement)

3 - 5 Bedrooms

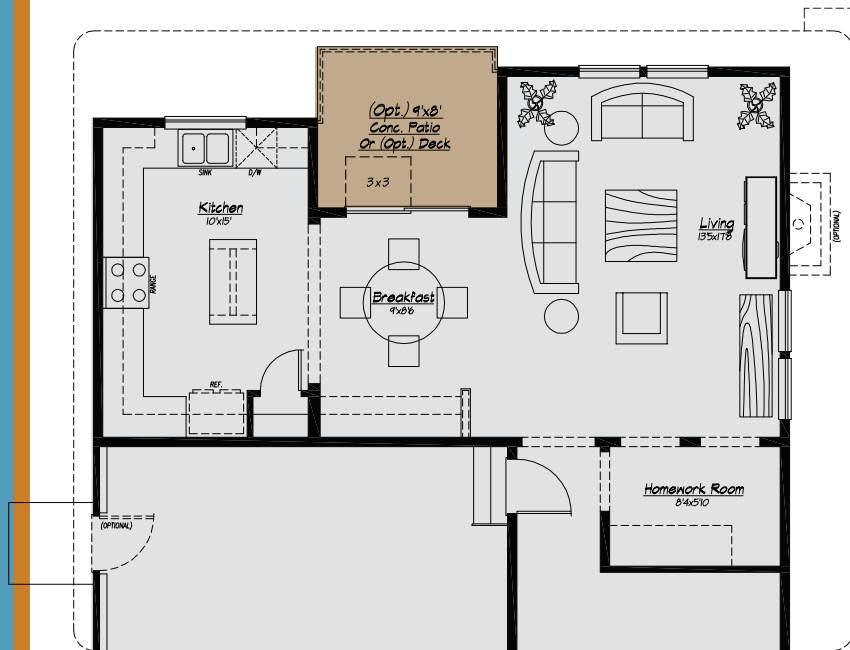
2.5 - 3.5 Bathrooms

2 - 3 Car Garage

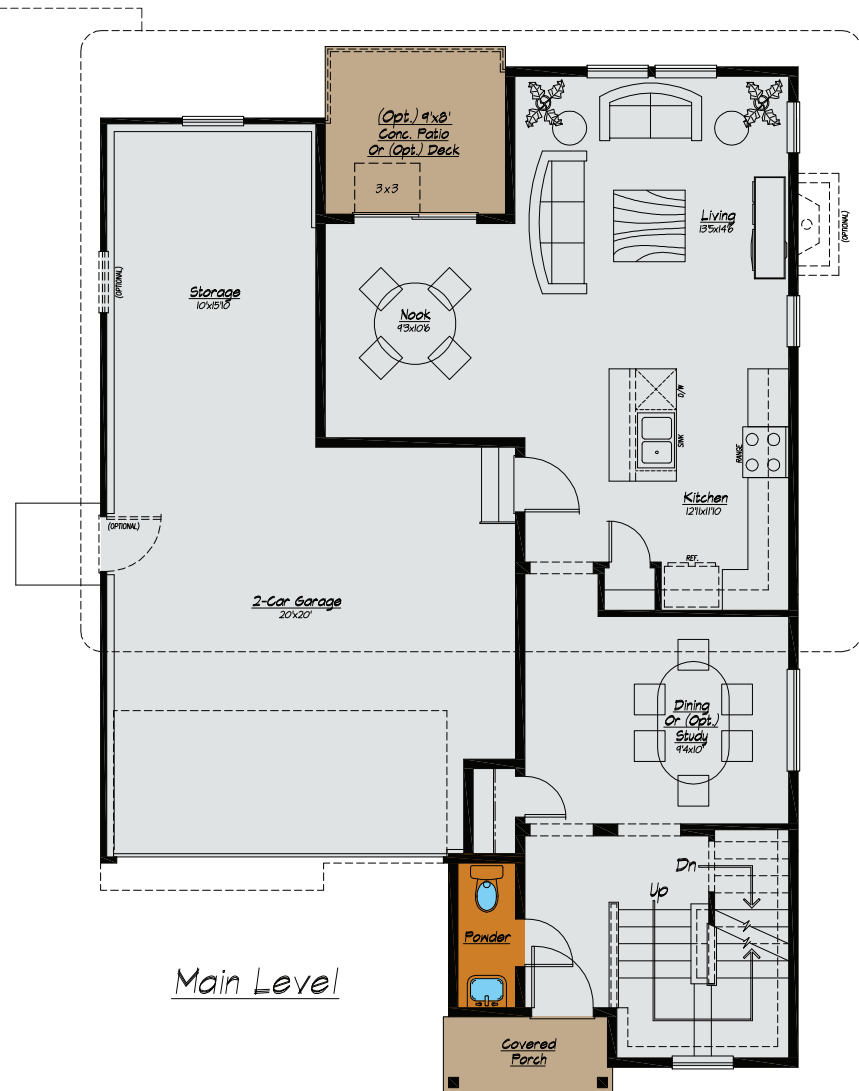


Proud Builder
**St. Jude Dream Home®
Giveaway**

COVINGTON HOMES
13725 Struthers Road Suite 201, CS 80921
www.covingtonhomesco.com



*(Optional)
Extended Living*



Main Level

The Foxglove, Plan 513

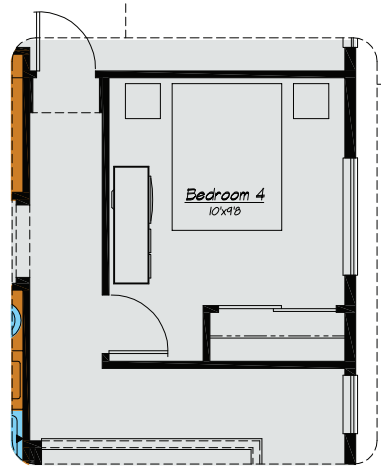
- 1,904 - 2,076 Total Finished Sq Ft
(w/ crawlspace or unfinished basement)
- 2,601 - 2,945 Total Finished Sq Ft
(w/ finished basement)
- 2,713 - 3,057 Total Sq Ft
(w/ opt. basement)
- 3 - 5 Bedrooms
- 2.5 - 3.5 Bathrooms
- 2 - 3 Car Garage



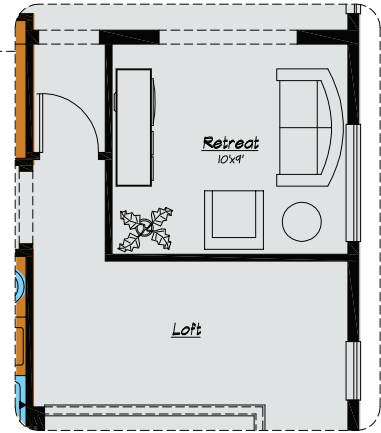
Prices, specifications and availability subject to change without notice, in a continuous effort to improve its product, Covington Homes reserves the right to make changes or modifications to plans, specifications, materials, features and colors without notice. Window and window locations may vary per exterior. All square footages are approximate and buyer is informed not to rely on estimates and should independently verify room dimensions on his/her home. rev. 1-2015.



The Foxglove, Plan 513
 1,904 - 2,076 Total Finished Sq Ft
 (w/ crawlspace or unfinished basement)
 2,601 - 2,945 Total Finished Sq Ft
 (w/ finished basement)
 2,713 - 3,057 Total Sq Ft
 (w/ opt. basement)
 3 - 5 Bedrooms
 2.5 - 3.5 Bathrooms
 2 - 3 Car Garage



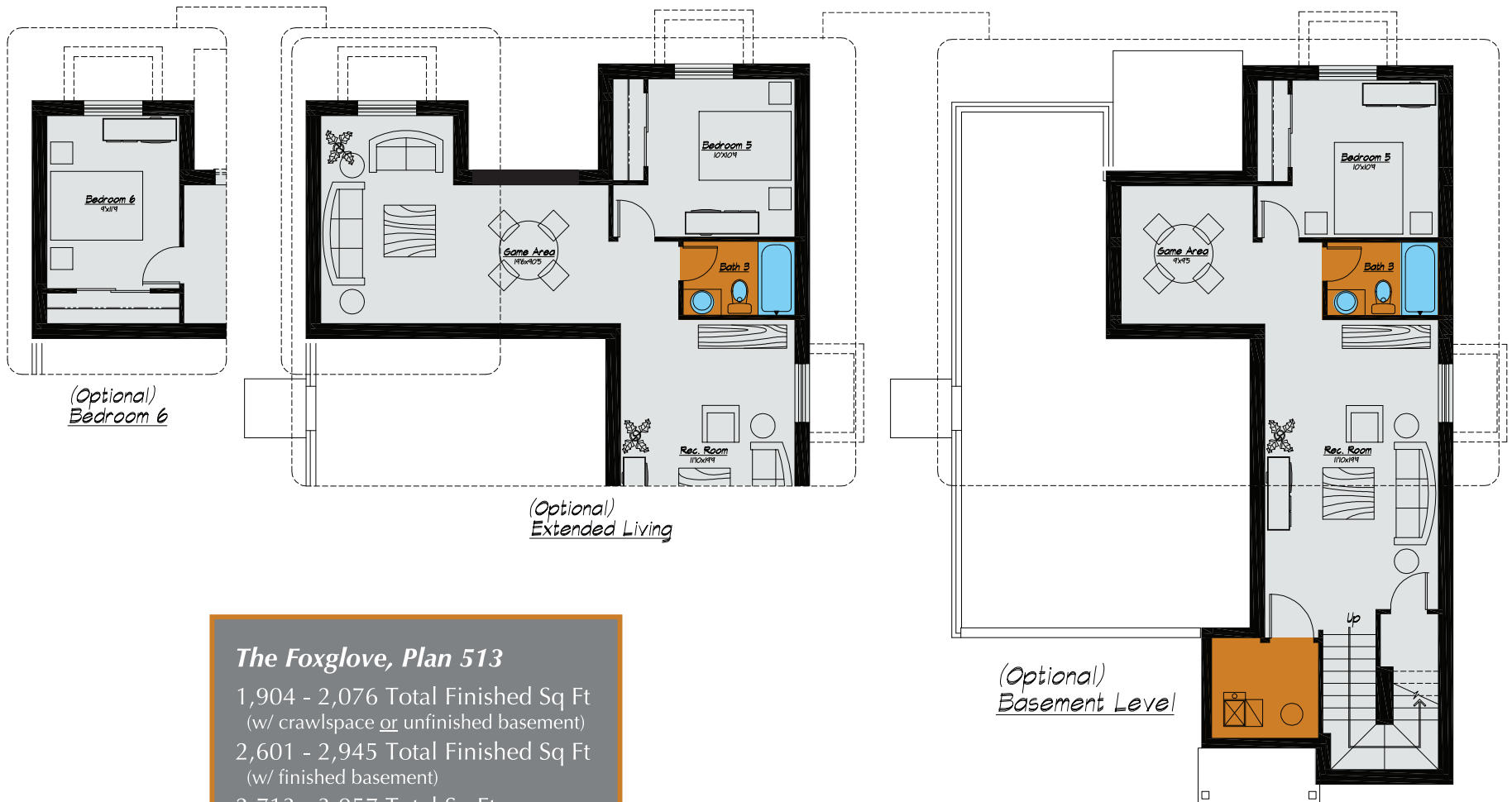
*(Optional)
 Bedroom 4*



*(Optional)
 Master Retreat*



Prices, specifications and availability subject to change without notice, in a continuous effort to improve its product, Covington Homes reserves the right to make changes or modifications to plans, specifications, materials, features and colors without notice. Window and window locations may vary per exterior. All square footages are approximate and buyer is informed not to rely on estimates and should independently verify room dimensions on his/her home. rev. 1-2015.



The Foxglove, Plan 513

- 1,904 - 2,076 Total Finished Sq Ft
(w/ crawlspace or unfinished basement)
- 2,601 - 2,945 Total Finished Sq Ft
(w/ finished basement)
- 2,713 - 3,057 Total Sq Ft
(w/ opt. basement)
- 3 - 5 Bedrooms
- 2.5 - 3.5 Bathrooms
- 2 - 3 Car Garage



Prices, specifications and availability subject to change without notice, in a continuous effort to improve its product, Covington Homes reserves the right to make changes or modifications to plans, specifications, materials, features and colors without notice. Window and window locations may vary per exterior. All square footages are approximate and buyer is informed not to rely on estimates and should independently verify room dimensions on his/her home. rev. 1-2015.